

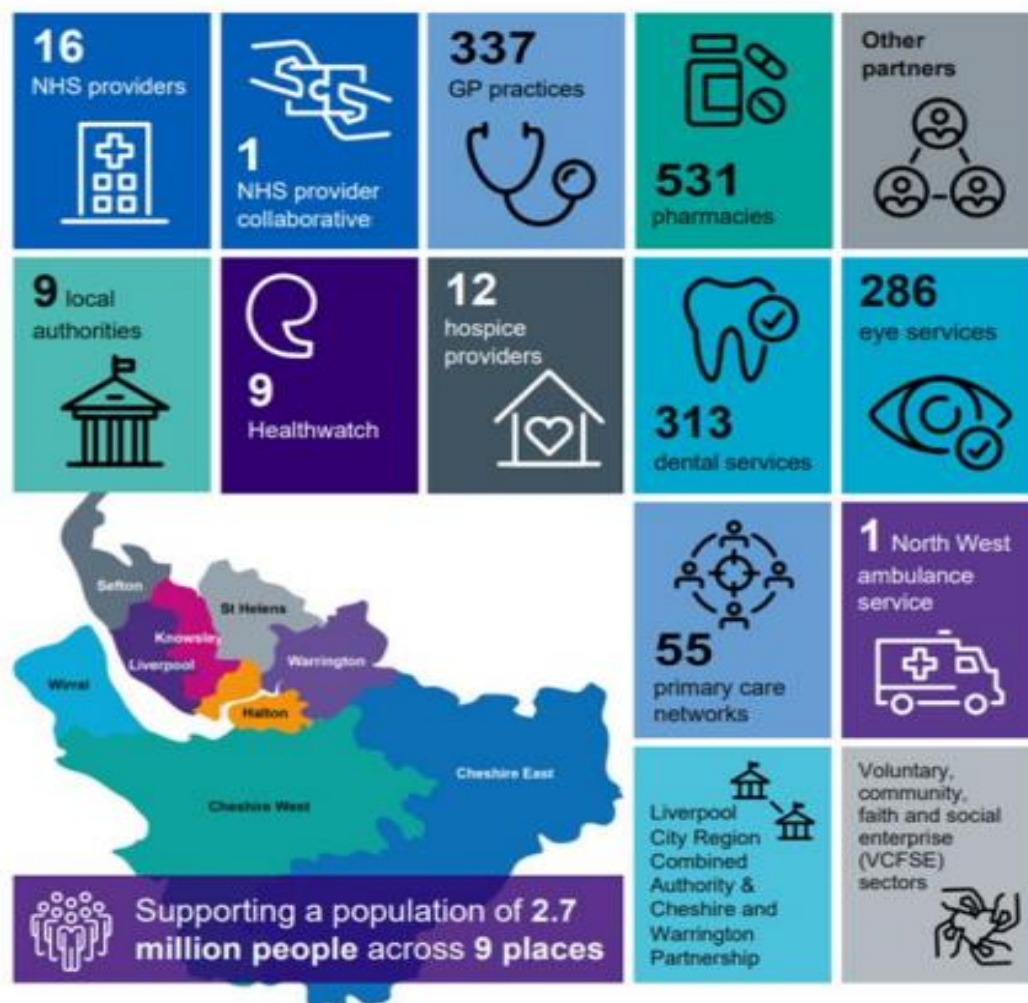
Joint capital resource use plan 2026/27

Region	North West
ICB	Cheshire and Merseyside
Date published	5 June 2026
Version control	1.0

Introduction

Cheshire and Merseyside is one of the largest Integrated Care Systems in England, with many stakeholders working together to improve the health and care of our population of c2.7million people across 9 Places.

The figure below illustrates how we are configured across Cheshire and Merseyside.



They key priorities for 2026/27 are to deliver three key shifts in care:

1. Hospital to Community
2. Sickness to Prevention
3. Analogue to Digital

And to ensure that all parts of our health and care system to deliver the digital and data requirements outlined in the NHS Medium Term Planning Framework.

Providers across Cheshire and Merseyside Integrated Care System will be investing over £442.5m capital funds to deliver this above three shifts in care.

2026/27 CDEL allocations and sources of funding

Capital investment planned for 2026/27 totals £442.5m, funded as follows

- Trust own resources (CDEL) £221.5m
- PDC for ICB Primary Care £14.8m
- Public Dividend Capital (PDC) £197.6m
- PFI Funded Capital £8.5m

The detail by Provider is set out in Annex A.

The PDC funded capital is provider related expenditure and remains subject to business case approval from NHSE.

Capital Prioritisation and Planning

Provider capital plans are developed by each organisation and internally prioritised within their CDEL envelope agreed with NHSE.

National PDC capital is allocated based on NHS priorities, major programmes or initiatives such as tackling critical infrastructure deficiencies, mental health out of area placements, net zero, reinforced autoclaved aerated concrete (RAAC), improving constitutional standards across Elective Care, Urgent and Emergency Care, Diagnostics, Community services, Mental Health, Learning Disabilities and autism; and expediting the digitisation of those organisations with the lowest digital maturity. These schemes are subject to business case approval from NHSE.

Backlog Maintenance costs are collected annually and indicate that there is a cost of £224m to address high and significant backlog maintenance. £19m has been ear-

marked by NHSE to address this backlog. The breakdown by provider and risk level is set out in the table below:

Trust	Cost to eradicate low risk backlog (£)	Cost to eradicate medium risk backlog (£)	Cost to eradicate high risk backlog (£)	Cost to eradicate significant risk backlog (£)	Total Cost to eradicate all backlog (£)
ALDER HEY CHILDRENS NHS FOUNDATION TRUST	1,500,000	500,000	500,000	100,000	2,600,000
BRIDGEWATER COMMUNITY HEALTHCARE NHS FOUNDATION TRUST	210,000	110,000	-	30,000	350,000
CHESHIRE AND WIRRAL PARTNERSHIP NHS FOUNDATION TRUST	1,543,500	1,775,000	1,620,000	1,165,000	6,103,500
CLATTERBRIDGE CANCER CENTRE NHS FOUNDATION TRUST	27,526,909	-	14,762,583	3,823,257	46,112,749
COUNTESS OF CHESTER HOSPITAL NHS FOUNDATION TRUST	10,791,258	7,214,983	12,324,224	21,556,858	51,887,323
EAST CHESHIRE NHS TRUST	776,373	7,747,959	529,828	7,928,522	16,982,682
LIVERPOOL HEART AND CHEST HOSPITAL NHS FOUNDATION TRUST	1,800,241	3,652,258	3,245,866	4,678,599	13,376,964
LIVERPOOL UNIVERSITY HOSPITALS NHS FOUNDATION TRUST	27,563,939	19,804,417	500,000	11,436,621	59,304,977
LIVERPOOL WOMEN'S NHS FOUNDATION TRUST	1,643,400	2,381,600	-	5,598,400	9,623,400
MERSEY AND WEST LANCASHIRE TEACHING HOSPITALS NHS TRUST	703,144	20,001,413	1,165,000	9,805,560	31,675,117
MERSEY CARE NHS FOUNDATION TRUST	514,930	14,444,801	74,278	7,337,502	22,371,511
THE MID CHESHIRE HOSPITALS NHS FOUNDATION TRUST	6,312,365	55,243,768	139,397	49,824,815	111,520,345
THE WALTON CENTRE NHS FOUNDATION TRUST	3,347,768	11,460,330	-	7,676,500	22,484,598
WARRINGTON AND HALTON TEACHING HOSPITALS NHS FOUNDATION TRUST	6,871,635	12,616,183	1,757,313	23,419,968	44,665,099
WIRRAL COMMUNITY HEALTH AND CARE NHS FOUNDATION TRUST	38,702	70,665	117,495	168,680	395,542
WIRRAL UNIVERSITY TEACHING HOSPITAL NHS FOUNDATION TRUST	11,261,600	16,652,710	21,900,100	11,314,350	61,128,760
Grand Total	102,405,764	173,676,087	58,636,084	165,864,632	500,582,567

Overview of ongoing scheme progression and expected business cases

In 2026/27 several large schemes which started in previous years will continue. The main ones are set out below with the values representing the in-year planned capital expenditure:

- Eradication of RAAC (Liverpool University Hospitals and Mid Cheshire Hospitals - £62m)
- New Hospitals Programme (Liverpool University Hospitals - £8m)

For 2026/27 the following key programme for which the ICS has been provide an indicative allocation will be subject to ICB letters of support and NHSE approval;

- Constitutional Standards national capital £86m. To secure funding for individual schemes, business cases are being developed focused on Community care, Diagnostics, Mental Health, Learning Disabilities and Autism and Urgent and emergency care performance improvement. Providers are currently in the process of seeking sign off from NHS England and C&M ICB on these individual business cases prior to procurement and delivery in year.

Cross-system and collaborative working

The capital allocation for Northwest Ambulance Service NHS Trust (NWAS) is governed by NHSE North West. NWAS operates across all ICBs in the Northwest region and as such the capital expenditure incurred by them directly impacts all 3 systems.

The ICB has worked closely with Lancashire and South Cumbria ICB on capital plans for Southport and Ormskirk Hospital sites as part Mersey & West Lancashire Teaching Hospitals NHS Trust.

Annex A – Cheshire and Merseyside 2026/27 – Capital Plan – Total CDEL

Figures in the table below reconcile to plans submitted to NHS England on the 15th April 2026. Work is still underway to agree further schemes in relation to Return to Constitutional Standards and other national programmes.

Category	Provider National Programme Spend	Alder Hey Children's	Bridgewater Community Healthcare	Cheshire & Merseyside ICB	Cheshire & Wirral Part.	Clatterbridge Cancer Cent.	Countess of Chester Hosp	East Cheshire	Liverpool Heart & Chest	Liverpool University Hosp	Liverpool Women's	Mersey & West Lancs	Mersey Care	Mid Cheshire Hospitals	The Walton Centre	Warrington & Halton Teach.	Wirral Comm Health & Care	Wirral University Teaching	System total
Total System Operational Capital	Operational Capital - ICB			14,792															14,792
	Operational Capital - Provider	16,663	1,580		3,465	12,336	8,169	6,993	8,204	30,683	6,205	28,526	37,508	11,001	13,376	14,538	8,156	14,151	221,554
	Total	16,663	1,580	14,792	3,465	12,336	8,169	6,993	8,204	30,683	6,205	28,526	37,508	11,001	13,376	14,538	8,156	14,151	236,346
Total National Programme Capital	Ambulance Replacement	0	0		0	0	0	0	0	0	0	0	0	0	0	0	0	0	0
	Cancer LINAC Replacement	0	0		0	0	0	0	0	0	0	0	0	0	0	0	0	0	0
	Estates Safety	0	7		354	2,045	1,103	931	1,006	88	616	1,416	815	1,361	940	2,988	31	5,288	18,989
	Diagnostics	2,986	0		0	370	2,848	3,082	55	1,350	0	5,250	0	7,251	1,575	2,850	247	1,975	29,839
	Elective Recovery	0	0		0	0	0	0	0	0	0	0	0	0	0	0	0	0	0
	Mental Health	0	0		1,419	0	0	0	0	0	0	0	1,507	0	0	0	0	0	2,926
	Mental Health Dormitories	0	0		0	0	0	0	0	0	0	0	0	0	0	0	0	0	0
	Mental Health: Reducing Out of Area Placements	0	0		3,284	0	0	0	0	0	0	0	0	0	0	0	0	0	3,284
	NHP	0	0		0	0	0	0	0	7,803	0	0	0	0	0	0	0	0	7,803
	RAAC	0	0		0	0	0	0	0	35,700	0	0	0	23,200	0	0	0	0	58,900
	STP - Hospital Upgrades	0	0		0	0	0	0	0	0	0	0	0	0	0	0	0	0	0
	Frontline Productivity	0	0		0	0	0	0	0	0	0	0	0	0	0	0	0	0	0
	UEC	1,200	0		1,900	0	475	850	0	6,779	0	0	4,800	0	0	0	0	1,800	17,804
	Community	0	0		0	0	0	0	0	0	0	0	0	0	0	0	0	0	0
	Other Adjustments - Provider	2,000	0		0	0	0	0	0	0	0	0	0	0	0	0	0	0	2,000
	Utilisation and Modernisation Fund			2,500															2,500
	Total	6,186	7	2,500	6,957	2,415	4,426	4,863	1,061	51,720	616	6,666	7,122	31,812	2,515	5,838	278	9,063	144,045
PFI capital charges	PFI capital charges	4,414	0		0	0	12	0	0	0	0	3,292	788	0	0	0	0	0	8,506
	Total	4,414	0		0	0	12	0	0	0	0	3,292	788	0	0	0	0	0	8,506
Net CDEL incl. intra-DHSC group eliminations	Total	27,263	1,587	17,292	10,422	14,751	12,607	11,856	9,265	82,403	6,821	38,484	45,418	42,813	15,891	20,376	8,434	23,214	388,897
Return to Constitutional Standards	Return to Constitutional Standards: Community	0	0		0	0	0	0	0	0	0	0	0	0	0	0	0	0	0
	Return to Constitutional Standards: Diagnostics	2,986	0		0	370	2,848	2,833	55	1,350	0	5,250	0	7,251	1,575	2,850	247	1,975	29,590
	Return to Constitutional Standards: Elective Recovery	0	0		0	0	0	0	0	0	0	0	0	0	0	0	0	0	0
	Return to Constitutional Standards: Mental Health	0	0		4,703	0	0	0	0	0	0	0	1,507	0	0	0	0	0	6,210
	Return to Constitutional Standards: UEC	1,200	0		1,900	0	475	850	0	6,779	0	0	4,800	0	0	0	0	1,800	17,804
	Total	4,186	0		6,603	370	3,323	3,683	55	8,129	0	5,250	6,307	7,251	1,575	2,850	247	3,775	53,604
Grand Total		31,449	1,587	17,292	17,025	15,121	15,930	15,539	9,320	90,532	6,821	43,734	51,725	50,064	17,466	23,226	8,681	26,989	442,501