



Your latest update from the Cheshire and Merseyside Pathology Network (CMPN)



Tracey Cole,
Programme Director,
Diagnostics



Rob Cooper,
East Hub Exec Lead



Rob Forster,
North Hub Exec Lead



Matthew Swanborough,
South Hub Exec Lead



PATHOLOGY TARGET OPERATING MODEL

YOUR LATEST UPDATE:

In 2017, NHS England (NHSE) performed an analysis of our pathology services across the country. Their results showed there was unwarranted variation in how pathology services are delivered to patients because of how they are currently organised.

In response to this, NHSE committed to consolidating pathology services in England by proposing to develop hub and spoke networks, also referred to as Target Operating Models (TOMs).

The Cheshire & Merseyside Pathology Network (CMPN), part of the Cheshire and Merseyside Acute and Specialist Trust (CMAST) Provider Collaborative, along with pathology clinical and operational leads, senior leads and Trust executives are working together to implement a pathology TOM for our local area, to ensure our pathology services meet the needs of our population and the requirements set out by NHSE.

Our ambitions:

01.

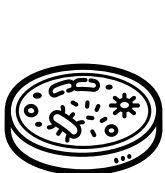
Improve systems and staff satisfaction through better harmonisation, development opportunities and improved systems and technology.

02.

Improve the quality of service for local patients by reducing wait times, ensuring fewer treatment delays and increasing productivity.

03.

Improve quality of care for clinicians through fewer delays to treatment, reduced wait time for results and a reduction in cancellations.





TARGET OPERATING MODEL

Laboratory Information System (LIMS)

The first stage of the Cheshire and Merseyside TOM implementation process is to introduce a new Laboratory Information Management System (LIMS), a new single IT system that will securely connect five pathology laboratories at:

- Countess of Chester Hospital NHS Foundation Trust
- Wirral University Teaching Hospitals NHS Foundation Trust
- Warrington and Halton Teaching Hospitals NHS Foundation Trust
- Mersey and West Lancashire Teaching Hospitals NHS Trust
- Liverpool Clinical Laboratories, part of University Hospitals of Liverpool Group



Magentus has been selected as the preferred supplier to deliver the £11.5M contract for the LIMS solution and work to implement the system will soon commence.

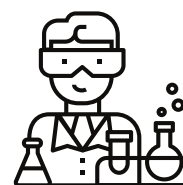
Laboratories utilising the LIMS solution will be equipped to work in a more harmonised way and be able to safely share test results across the region, regardless of where the original test was carried out, reducing the need for re-testing.

LIMS will also allow for more complex tests to be processed quicker, reducing the time it takes for patients to receive their results and begin any required treatment sooner.

With the implementation of LIMS, we will be a big step closer to our ultimate ambition to:

- Improve systems and staff satisfaction through better harmonisation, development opportunities and improved systems and technology.
- Improve the quality of service for local patients by reducing wait times, ensuring fewer treatment delays and increasing productivity.
- Improve quality of care for clinicians through fewer delays to treatment, reduced wait time for results and a reduction in cancellations.

Next steps are for participating Trusts, CMPN and Magentus, to collectively develop a LIMS implementation plan. We are currently working with your pathology operational and clinical leads on how best to do this, including how we can best support your laboratories to ensure you have the right resources in place for a successful implementation process.





TARGET OPERATING MODEL

Target Operating Model (TOM)

LIMS will act as a key enabler as we work towards the development of the pathology Target Operating Model (TOM), which is our plan to consolidate pathology services across Cheshire and Merseyside providing better, more equitable access and ensuring our patients are able to get the right test at the right time with quicker results.

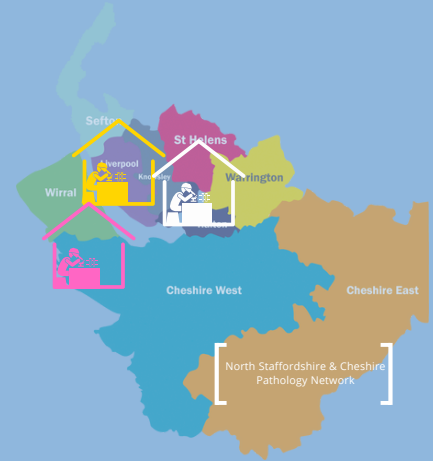
By connecting pathology services across Cheshire and Merseyside, the TOM will help to create more streamlined pathology processes that will support the overall goal of reducing unwarranted variation and, in turn, create a more robust, resilient and efficient pathology network.

The TOM will consist of 3 pathology hubs providing a single service for each identified geography. This includes:

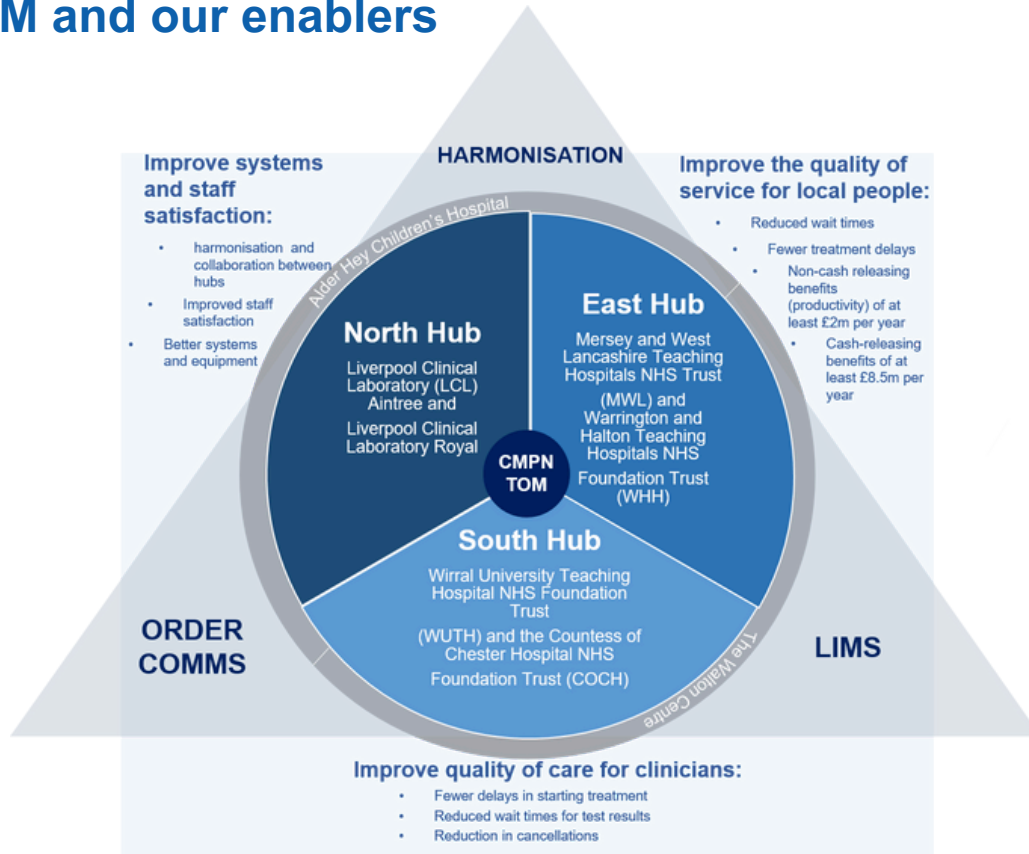
The North Hub: This hub will deliver pathology services via Liverpool Clinical Laboratories (LCL).

The East Hub: This hub will deliver pathology services on behalf of Mersey and West Lancashire Teaching Hospitals NHS Trust (MWL) and Warrington and Halton Teaching Hospitals NHS Foundation Trust (WHH).

The South Hub: This hub will deliver pathology services on behalf of Wirral University Teaching Hospital NHS Foundation Trust (WUTH) and the Countess of Chester Hospital NHS Foundation Trust (COCH).



The TOM and our enablers





TARGET OPERATING MODEL

Pathology Hubs



The aims of the hubs will be to help Cheshire and Merseyside by developing a consistent approach to processing samples, ensuring standardisation of testing catalogues and protocols where appropriate, establishing the workforce required to perform them, ensuring all labs meet their specified equipment and technology requirements, and establish a designated IT system to allow effective collaboration across the system.

The TOM will allow for more collaboration across pathology services in Cheshire and Merseyside and will make better use of our highly skilled workforce to deliver improved diagnostic services that will support better patient outcomes.

Communications

As plans are finalised and decisions are made, we will ensure that all of our colleagues and stakeholders are regularly updated and are aware of each step of the process and their roles in each step.



To ensure that you are receiving the information you need in the format that you prefer it in, we will be asking you to fill out a short survey that will outline your preferred methods of receiving and communicating information.



We have also created a space on the ICB website that will hold all of the information that we share with you. That can be found at <https://www.cheshireandmerseyside.nhs.uk/your-health/provider-collaboratives/cmast/diagnostics/pathology-network/pathology-updates/>



In the meantime, if you have any questions please reach out to your managers or operational leads for your respective Trusts:

Countess of Chester Hospital NHS Foundation Trust: joe.banwell@nhs.net

Wirral University Teaching Hospitals NHS Foundation Trust: alex.warrington@nhs.net

Warrington and Halton Teaching Hospitals NHS Foundation Trust: neil.gaskell@nhs.net

Mersey and West Lancashire Teaching Hospitals NHS Trust: kevin.mclachlan@sthk.nhs.uk

Liverpool Clinical Laboratories: karl.mcintyre@liverpoolft.nhs.uk

Thank you and warm regards,

Tracey Cole
Rob Forster

Rob Cooper
Matthew Swanborough